



NELSON ARTS FESTIVAL

19 – 29 OCTOBER 2023
[NELSONARTSFESTIVAL.NZ](https://nelsonartsfestival.nz)

CURATORIAL STATEMENT

In 2022, we sat with the (un)certainty of change. It challenged us, the instability gnawing at our absolutes. As we rolled with the punches, sometimes it was hard to see how to soar with the winds. But the winds were still there, calling – and journeys are still to be taken.

In 2023, we are looking to the heavens in preparation to return to the Moon. In the face of the climate crisis and war and oppression, we see increasing migration to reach safer lands, for the Race to Zero.

We seek authenticity as we wade through misinformation. We discover growth and spark to counter austerity and hardship. As we journey together around the Sun, we find ourselves 8 billion strong and 8 billion divided. And so we look to be part of the momentum - rewilding, regenerating, rebalancing, reinvigorating.

On our whenua, so with art - our material to craft and hold is growth, change - constantly ebbing and flowing, transforming.

**Mā te kimi ka kite, mā te kite ka mōhio,
mā te mōhio ka mārama.**

*Seek and discover, discover and know,
know and become enlightened.*

Migrate / Momentum / Movement.

Re(wild), re(move), re(wake).

Be curious.

NELSON ARTS FESTIVAL 2023

EXPLORING

US | YOU | WHENUA | WHAKATŪ

**Lydia Zanetti, Te Kaihautū | Executive & Artistic Director,
Nelson Arts Festival**

PIKI MAI, KAKE MAI!

I hope you are as excited as I am about our 2023 Nelson Arts Festival from 19 to 29 October. It's the longest-running annual arts festival in Aotearoa New Zealand, now in its 29th year. It's about bringing our community together after years of Covid disruptions, and celebrating Whakatū Nelson's creative spirit and arts sector. There is something for everyone in the 53 events over 11 days.

There is theatre, dance, circus, Pukapuka Talks, poetry, exhibitions and the return of Nelson's iconic Mask Carnivale on Friday 27 October.

Invite friends and relatives to come and visit to enjoy Whakatū Nelson's spring and this unique festival. Be sure you come out and enjoy Whakatū at its best.

Hon Dr Nick Smith, Mayor of Nelson | Te Koromatua o Whakatū

NGĀ MIHI, THANK YOU!

NELSON FESTIVALS TRUST:

**Ali Boswijk (Chair) | Luke Acland | Cynthia Greep |
Johannah Kātene-Burge (Ngāti Toa Rangatira, Ngāti
Tama) | Gemma Laing | Johny O'Donnell (Te Rarawa,
Te Aupōuri) | Sarah Yarrow**

Festival Patron
Pic Picot

NELSON ARTS FESTIVAL TEAM 2023:

Lydia Zanetti (they/them/ia)
Executive & Artistic Director

Annie Pokel (she/her/ia)
Head of Creative & Communications

Rose McGrannachan (she/her/ia)
Head of Business & Operations

Kerry Sunderland (she/her/ia)
Pukapuka Talks Programme Manager
| Development Manager

Olivia Flanagan (she/they/ia)
Programme Coordinator | Access Coordinator

Sylvan Thomson (he/him/ia)
Tamaraki & Rangatahi Programme Coordinator

Maria Anderson (she/her/ia)
Audience Experience Coordinator

Natalie Gilberd (she/her/ia)
Marketing Coordinator

JR Richardson (he/him/ia) | VenueTech
Technical & Production Manager | Head of Sound

Michelle Lafferty (she/her/ia) | Elephant Publicity
Publicist

Antony Hodgson (he/him/ia)
Head of Projection | Deputy Technical & Production Manager

Sam Cole (he/him/ia)
Mask Carnivale Project Manager

Rosie Pidd (she/her/ia)
Mask Parade Coordinator

Wendy Clease (she/her/ia)
Head of Lighting

Small but mighty team from around Aotearoa
Festival Technical Team & Crew

A HUGE, WARM, HEARTFELT THANK YOU TO...

Our whānau, friends and furry mates, supporting us through the wild festival times. The Nelson Arts Festival whānau Annabel, Sophie, Charlie, Amanda, Axel, Michaela, Padma, Jacquetta, Rose, Shanine, past Board members particularly Brent & Zoe, & our incredible volunteers; Martin & NCC team; Eliane & Theatre Royal team; James & NCMA team; Julie, Kyla, Will at Suter; Lloyd, Janja & Heidi at Refinery; Keegan at Kirby Lane; Norma, Jenny & Steve at Victory Community Centre; Paul at Victory Boxing; Meg, Marnie, Ang & Margot at Tāwhiri; Mary at MCH; Cass, Gretchen & Cathryn at Creative NZ; John & Patronbase team; the team at Downing; Anna & Ramisha at MNT; Anne at Make/Shift Spaces; Tanya & Cultural Conversations community; Debbie & Youth Councillors; Olivia & Nicole at NMIT; NRDA team; Ange & Lynet at Morrison Square; Simon at Uniquely Nelson; Donna Chapman & Jane Fisher; Bill & Mary Page; Platform Interpreting NZ; Arts Access Aotearoa; Audio Described Aotearoa Ltd.

To our incredible artists and our committed, engaged community: you make this Festival what it is.

Brochure designed by Downing, printed with vegetable inks on FSC mixed certified, responsibly sourced paper.

	PRE-FEST	OPENING NIGHT	LONG WEEKEND			
	WED 18	THU 19	FRI 20	SAT 21	SUN 22	MON 23
REFINERY ARTSPACE		SENSORY SELF PORTRAITS – BAILEE LOBB 5-8pm Performance: 7pm	SENSORY SELF PORTRAITS – BAILEE LOBB 10am-5pm Performance: 3pm	SENSORY SELF PORTRAITS – BAILEE LOBB 10am-2pm Performance: 10am + 1pm		
NELSON AIRPORT TERMINAL		COULD BE BIGGER. – ELISABETH POINTON	COULD BE BIGGER. – ELISABETH POINTON	COULD BE BIGGER. – ELISABETH POINTON	COULD BE BIGGER. – ELISABETH POINTON	COULD BE BIGGER. – ELISABETH POINTON
BIG EVENTS		NIGHT VISION 5pm-8pm TUNE UP @ Kirby Lane 5.30-8pm				
GREAT OUTDOORS						AFTER DARK II: DUSK CHORUS 7.30pm (130min) @ Brook Waimārama Sanctuary
TE TAI-O-AORERE TASMAN		WRITING FUNNY STORIES: SCHOOLS' WORKSHOPS 9.30am (75min) @ Te Noninga Kumu Motueka Public Library				FORAGING YOUR WAY TO WELLNESS 12pm (60min) @ Moutere Hills Community Centre
AROUND YOUR NEIGHBOURHOOD	WRITING FUNNY STORIES: SCHOOLS' WORKSHOP 1.30pm (75min) @ Elma Turner Library		HERE IF YOU NEED – KURA FORRESTER 8pm (60min) @ The Boathouse		WORKSHOP FOR WRITERS WITH CAROLINE BARRON 3pm (60min) @ Elma Turner Library	POETRY WORKSHOP 11.30am (120min) @ Victory Community Centre VICTORY POETRY SLAM – SHELDON RUA + TALIA STANLEY 4pm (60min) @ Victory Boxing
CULTURAL CONVERSATIONS		FLORECER – LUCIA ZÚNIGA CÁCERES	FLORECER – LUCIA ZÚNIGA CÁCERES			FLORECER – LUCIA ZÚNIGA CÁCERES SOUNDPAINTING WORKSHOP 6pm (120min)
THE SUTER THEATRE + THE SUTER ART GALLERY TE ARATOI O WHAKATŪ		IN THE TEMPLE – CATHERINE BAGNALL + JANE SAYLE 5.30pm (20min)	TOOLS FOR NAVIGATING OUR CRAZY WORLD 12.30pm (60min) WHEN THE PAST CATCHES UP 3pm (60min) WINE O'CLOCK MYTH MEETS THE DRINKING GAME 6pm (60min)	KAWAI: FOR SUCH A TIME AS THIS 11am (60min) END TIMES: THE QUESTION OF HOPE 1.30pm (60min) DAZZLING NEW VOICES 4pm (60min) CELEBRATION OF HIWA 5pm (60min)	CAN I LIVE? – FEHINTI BALOGUN + COMPLICITÉ 4pm (60min)	
NCMA & CLASSICAL MUSIC		LUNCHTIME CONCERTS: MIKE FORD 12.30pm (50min) @ NCMA				FORCE OF NATURE: CELEBRATING 100 YEARS OF FOREST & BIRD – NZTRIO + FRIENDS 5.30pm (90min) @ NCMA
THEATRE ROYAL		THE SAVAGE COLONISER SHOW – TUSIATA AVIA 8pm (70min)	THE SAVAGE COLONISER SHOW – TUSIATA AVIA (schools show) 1pm (70min) THE SAVAGE COLONISER SHOW – TUSIATA AVIA 8pm (70min)	AILMENTS – HAYLEY SPROULL 8pm (60min)	TACKLING HATE: FACING UP TO FEAR & LOATHING IN AOTEAROA 11am (60min) THERE'S A CURE FOR THIS 1.30pm (60min) WITI & FRIENDS GALA NIGHT 7pm (90min)	
DEVILLE MUSIC HUB Doors 8pm, Support Act 8.30pm, Main Act 9.30pm		MĀ & THE FLY HUNNIES	CHAI	KITA		
EXHIBITIONS & INSTALLATIONS (various times & locations)		KANOHI KITEA (the seen face) + CATHERINE BAGNALL @ The Suter Art Gallery Te Aratoi o Whakatū				
		TE ARA O HINE RĒHIA – A JOURNEY INTO THE WORLD OF KAPA HAKA @ Nelson Provincial Museum				
		WHISPERS IN THE STREETS @ Whakatū CBD + NMIT Te Pūkenga G-Block Atrium				
		CAPTURING WHAT CANNOT BE CAPTURED – KAREN SEWELL @ Atelier Studio Gallery + Christ Church Cathedral				
		TE PITO @ Surprise location				

MIDWEEK MAYHEM			CLOSING WEEKEND		
TUE 24	WED 25	THU 26	FRI 27	SAT 28	SUN 29
SENSORY SELF PORTRAITS – BAILEE LOBB 10am-5pm	SENSORY SELF PORTRAITS – BAILEE LOBB 10am-5pm	SENSORY SELF PORTRAITS – BAILEE LOBB 10am-5pm	SENSORY SELF PORTRAITS – BAILEE LOBB 10am-5pm	SENSORY SELF PORTRAITS – BAILEE LOBB 10am-2pm	
COULD BE BIGGER. – ELISABETH POINTON	COULD BE BIGGER. – ELISABETH POINTON	COULD BE BIGGER. – ELISABETH POINTON	COULD BE BIGGER. – ELISABETH POINTON	COULD BE BIGGER. – ELISABETH POINTON ARTIST TALK: 1pm @ Refinery ArtSpace	COULD BE BIGGER. – ELISABETH POINTON
			MASK CARNIVALE 5pm-10pm		
			TŌRUA – MOTH During Mask Carnivale (50min) Meet @ Refinery ArtSpace	TŌRUA – MOTH 10am + 12pm (50min) Meet @ Refinery ArtSpace	GRÁDA 2pm, doors at 12pm (75min) @ Neudorf Vineyards
COUNTER-CULTURE 6pm (60min) @ Te Noninga Kumu Motueka Public Library	TENSE – WRITTEN BY DONNA MCLEOD, PRESENTED BY TE ORO HĀ 7.30pm (60min) @ Te Noninga Kumu Motueka Public Library				
FLORECER – LUCIA ZÚÑIGA CÁCERES SENTIMENTAL TUNES WORKSHOP 7pm (75min)	FLORECER – LUCIA ZÚÑIGA CÁCERES	FLORECER – LUCIA ZÚÑIGA CÁCERES SPANISH LANGUAGE STORYTIME 6.30pm (60min)	FLORECER – LUCIA ZÚÑIGA CÁCERES		
DOUBLE GOER – FOSTER GROUP DANCE 6.30pm (50min)	DOUBLE GOER – FOSTER GROUP DANCE 6.30pm (50min)				MOKORUA: NGĀ KŌRERO MŌ TŌKU MOKO KAUAE – MY STORY OF MOKO KAUAE 2pm (60min)
		COUCH STORIES 8pm (90min) @ NCMA	LUNCHTIME CONCERTS: DUO ENHARMONICS 12.30pm (50min) @ NCMA	REIMAGINING MOZART – VOICES NZ CHAMBER CHOIR 7.30pm (60min) @ Christ Church Cathedral	
RISE OF THE OLIVE – LASER KIWI 8pm (60min)	RISE OF THE OLIVE – LASER KIWI 8pm (60min)	TENSE – WRITTEN BY DONNA MCLEOD, PRESENTED BY TE ORO HĀ 8pm (60min)	TENSE – WRITTEN BY DONNA MCLEOD, PRESENTED BY TE ORO HĀ (schools show) 1pm (60min)	GIRL, IN A SAVAGE WORLD – THEIA X TE KAAHU 6.30pm (60min)	
JAZMINE MARY			MASK CARNIVALE AFTERPARTY WITH DELUSIONAL DISCO DRONGOS	JUJULIPPS + INFORDIN	
KANOHI KITEA (the seen face) + CATHERINE BAGNALL @ The Suter Art Gallery Te Aratoi o Whakatū					
TE ARA O HINE RĒHIA – A JOURNEY INTO THE WORLD OF KAPA HAKA @ Nelson Provincial Museum					
WHISPERS IN THE STREETS @ Whakatū CBD + NMIT Te Pūkenga G-Block Atrium					
CAPTURING WHAT CANNOT BE CAPTURED – KAREN SEWELL @ Atelier Studio Gallery + Christ Church Cathedral					
TE PITO @ Surprise location					

BOOKING & ACCESSIBILITY INFORMATION

PAY WHAT YOU CAN TICKETING IS BACK IN 2023

We're thrilled to be able to offer Pay What You Can tickets (PWYC) for our ticketed events again this year. Ticket prices continue to pose a barrier for some and PWYC makes the Festival more financially accessible for more of our community.

When you buy a ticket for a Nelson Arts Festival event this year, there are five price tiers to choose from: Tiers 1 and 2 are lower, Tier 3 is our recommended/traditional ticket price, and Tiers 4 and 5 are higher, enabling those who can to 'pay it forward' to support others.

Funded by: The Cultural Sector
Innovation Fund, Manatū Taonga
| Ministry for Culture and Heritage



Key Partner:



Please note: **Reimagining Mozart** and **NCMA Lunchtime Concerts** are ticketed independently, and therefore not PWYC. **Cultural Conversations** ask for a donation of \$5-\$20 in support of their artists.

BOOKING ONLINE

You can book tickets for all our events on our website www.nelsonartsfestival.nz - find the *Book Now* button on each event page.

BOOKING IN PERSON

Swing by our friendly Box Offices if you prefer to book in person:

Theatre Royal

78 Rutherford Street | 12PM – 4PM weekdays
Phone: 03 548 3840 (Select 1)

Nelson Centre of Musical Arts (NCMA)

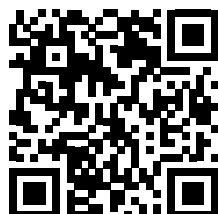
48 Nile Street | 10AM – 4PM weekdays weekdays
Phone: 03 548 9477

FIND OUT MORE:

Visit: nelsonartsfestival.nz/information

Email: boxoffice@theatreroyalnelson.co.nz | music@ncma.nz

Scan to book online, and for more information about our events, venues, accessibility and trigger warnings:



LOOKING OUT FOR EACH OTHER

Nelson Arts Festival is committed to providing accessibility for our community and a safe space for all.

We aim to provide as much information as possible about accessing our Festival - from getting to our venues and booking your Pay What You Can tickets to Health & Safety and content warnings.

Every event listing includes accessibility information and, where needed, an alert symbol to indicate content or trigger warnings. For full details, visit: nelsonartsfestival.nz/information

HEALTH & SAFETY:

The Festival team, artists and audiences are required to comply with the latest Government health advice at the time of the event. We are committed to the safety and wellbeing of our community first and foremost. We encourage mask wearing indoors where possible to support this.

If an artist gets sick and can no longer travel or perform, events may be postponed or cancelled. We will offer exchanges or refunds to our ticket holders in this instance.

SAFE SPACE:

We have zero tolerance for discriminatory and bullying behaviours, either online or in-person.

ACCESSIBILITY PROGRAMME

It is our intention as an organisation to provide greater accessibility to the Festival as a whole.

All our venues are wheelchair accessible and welcome companion dogs. We have included accessibility symbols in our event listings to help you navigate the programme. Plus, our website has extended information on:

- venue access,
- service dogs,
- companion seats;

and events that are:

- highly visual,
- without major language barriers,
- NZ Sign Language interpreted,
- audio-based, and/or, audio-described.

ANY QUESTIONS?

Visit: nelsonartsfestival.nz/information

Email: access@nelsonartsfestival.nz

Text too small? A large print version of this print programme is also available for download on our website.

OUR FESTIVAL WHĀNAU OF PARTNERS

It truly takes a village. Like a flock of birds, our community comes together every year to create the way forward for our Festival. From the joyful Pīwakawaka to the mighty Moa, our partners all play a part in making the Nelson Arts Festival possible.

CORE FUNDER



MAJOR FUNDERS



MOA PARTNERS



KĀREAREA PARTNERS



GRANTS



Top of the South Community Foundation, Community Organisation Grants Scheme (COGS), Tasman Creative Communities Scheme, Trillian Trust, Sargood Bequest, Network Tasman Trust, Lottery Grants Board, Mainland Foundation.

KEA PARTNERS



KERERŪ PARTNERS



TŪI PARTNERS

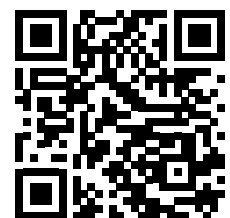


PĪWAKAWAKA FESTIVAL SUPPORTERS

NZ Society of Authors Top of the South branch, Read NZ Te Pou Muramura, Resene, Interislander, The Green Collective, Community Art Works, NZ Brochures & Distribution, NRDA, Mainfreight, Speedy Signs Nelson, Fineline Architecture.

KEEN TO JOIN THE WHĀNAU? GET IN TOUCH

Scan for more information:











GLOSSARY

CATEGORY / GENRE

 Circus/Cabaret	 Ngā Toi Māori
 Comedy	 Aotearoa Premiere
 Dance	 Theatre
 Family Friendly	 Visual Arts
 Film	 Writers + Kōrero
 Music	

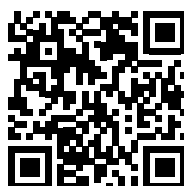
CONTENT & ACCESSIBILITY

 Audio Based	 Highly Visual
 Audio Described	 Low/No Language Barrier
 Captioned Performance	 NZSL Interpreted
 Hearing Assistive Technology Available	 Trigger Warning

AGE RECOMMENDATIONS



Scan for more content & accessibility information:



TE ARA O HINE RĒHIA – A JOURNEY INTO THE WORLD OF KAPA HAKA



MELISSA BANKS

Te Tauihu ki te poi! A homage to kapa haka in Te Tauihu, this exhibition tells the story of kapa haka through the eyes of photographer **Melissa Banks**. **Te Ara o Hine Rēhia** presents the full journey from preparation to performance.



NELSON PROVINCIAL MUSEUM | THROUGHOUT FESTIVAL | WEEKDAYS 10AM - 5PM, SAT - SUN 10AM - 4.30PM | FREE FOR NELSON TASMAN LOCALS

FLORECER



LUCIA ZÚÑIGA CÁCERES

Florecer means 'to bloom' in Spanish. Since migrating to Aotearoa, **Lucia Zúñiga Cáceres'** art practice has blossomed alongside her own journey of healing. Experience this in her joyful paintings.



CULTURAL CONVERSATIONS | THROUGHOUT FESTIVAL | SEE WEBSITE FOR GALLERY HOURS | DONATION

SOUNDPAINTING WORKSHOP



ALVARO MORENO

Transcending conventional boundaries and fostering collective creativity, Soundpainting is a captivating multidisciplinary live composition technique that unites music, movement, and theatre in a dynamic artistic collaboration and immersive performance.

CULTURAL CONVERSATIONS | MON 23 OCT | 6PM | 120 MIN | DONATION

SENTIMENTAL TUNES WORKSHOP



KAROLINA GORTON

Local artist and storyteller **Karolina Gorton** invites you to an evening where sharing stories about songs that hold memories for us creates a special vocabulary of emotions.

CULTURAL CONVERSATIONS | TUES 24 OCT | 7PM | 75 MIN | DONATION

WHISPERS IN THE STREETS



Journey / Movement / Growth / Regeneration. Led by artist and tutor **Klaasz Breukel**, Level 5 NMIT | Te Pūkenga Arts & Media students splash their creations which reflect on our ever-changing world across the city's bollards.

WHAKATŪ CBD + NMIT | TE PŪKENGA | 19 - 29 OCT | TUES-FRI 9AM - 5PM | FREE

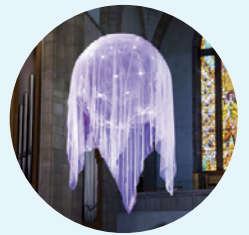
Supported by: Phantom Billstickers & NMIT | Te Pūkenga

CAPTURING WHAT CANNOT BE CAPTURED



KAREN SEWELL

Exploring relationships between colour, light and space, **Karen Sewell's** artworks investigate connections between abstraction and spiritual experience. The floating sculpture **Luminary** at the Cathedral accompanies the exhibition at Atelier.



ATELIER STUDIO|GALLERY + CHRIST CHURCH CATHEDRAL | THROUGHOUT FESTIVAL | GALLERY TUES - FRI, 11AM - 5PM, SAT 11AM - 2PM | FREE

KANOHI KITEA (THE SEEN FACE)



Moko kanohi (facial markings) are a powerful expression of Māori cultural heritage worn with pride. Gathering images and objects that share the journey of moko kanohi within Te Tauihu, **Kanohi Kitea** brings to life stories that connect the wearer to their people and place.

Please join us for **Mokorua** with **Ariana Tikao** on Saturday 28 October.

THE SUTER ART GALLERY TE ARATOI O WHAKATŪ | THROUGHOUT FESTIVAL | OPEN DAILY 9.30AM - 4.30PM | FREE

Image: *Kaumātua Jane du Feu (moko kauae - an expression of tipuna)*

CATHERINE BAGNALL



An intimate display of **Catherine Bagnall's** magical, dream-like watercolours, inspired by the artist's life-long and profound love of the Aotearoa wilderness.



THE SUTER ART GALLERY TE ARATOI O WHAKATŪ | THROUGHOUT FESTIVAL | OPEN DAILY 9.30AM - 4.30PM | FREE

SPANISH LANGUAGE STORYTIME



CULTURAL CONVERSATIONS RANGATAHI ARTISTS

A todos nos encanta una buena historia antes de dormir! Everyone loves a good bedtime story - here's your chance to spend a Festival event in your PJs.

CULTURAL CONVERSATIONS | THURS 26 OCT | 6.30PM | 60 MIN | DONATION



TE PITO



KERI-MEI ZAGROBELNA

A digital sound and visual experience that acts as a creative portal, **Te Pito** tells the story of connecting to our whenua (land) and ancestry. A descendant of Te Āti-Awa with links to Whakatū, **Keri-Mei Zagrobelna** hopes Te Pito will encourage others seeking to reclaim identity and reconnections to whakapapa.

SURPRISE LOCATION | THROUGHOUT FESTIVAL | AFTER SUNSET | FREE



DEVILLE MUSIC HUB

DOORS 8PM | SUPPORT ACT 8.30PM | MAIN ACT 9.30PM

Supported by:



MĀ & THE FLY HUNNIES



THURS 19 OCT

E ngā iwi taketake o Te Taihū o Te Waka o Māui kua roa te wā! Mai i ngā hau titipārera o Pōneke kei te hoki mai tēnei taurira ki te whenua o Whakatū! Tihei Mauri Ora! **MĀ and The Fly Hunnies** welcomes all to a safe place to bob ya head, delivering music from *Breakfast With Hades* alongside new tunes.



JAZMINE MARY



THURS 26 OCT

Captivating Noir Folk artist **Jazmine Mary** is "rising into our collective consciousness as a star, as an artist to be reckoned with, as a creative force". They crack open the beauty and ugliness of the world with a voice that critics are calling "truly a wonder". Recently opened for Kurt Vile, Billy Bragg, Gang Of Youths. An award-winning gig for melancholy and exultation.



CHAI



FRI 20 OCT

Persian-NZ, genre-bending musician and artist **CHAI**'s discography has traversed the realms of R&B, Hip Hop, electronica and more. Her debut EP, *Lightswitch*, featured a mesmerizing blend of sounds and footage from Oman to Joshua Tree, and tracks that were part of an EA Sports' soundtrack and Netflix film. Following on from her second release *Pineapple Pizza EP*, CHAI returns with her new 2023 single *Drippin' in Gold*.



MASK CARNIVALE AFTERPARTY WITH DELUSIONAL DISCO DRONGOS



FRI 27 OCT

Join these fine human specimens from Tākaka and Ōtautahi who bring the disco heat with eclectic selections from around the world! A badly kept secret for lovers of positive dance music.



KITA



SAT 21 OCT

Despite the overwhelming news of the everyday, remember: *Love Lives Here!* Pōneke-based **KITA** meshes folk-soul, guitar and storytelling with thick lush sounds and barking psychedelic drums to bring you a must-see live experience. Off the back of Splore and WOMAD, **Nikita 雅涵 Tu-Bryant**, **Ed Zuccollo (ZUKE)** and **Rick Cranson** (Little Bushman) will blow you away "with [their] massive sound".



JUJULIPPS + INFORDIN



SAT 28 OCT

From Amapiano to Hip Hop, South African-born dynamic rapper **Jujulipps** has been captivating fans with their feverish flow and bold live show, featuring iconic 2022 bop *Hilary Banks*. Full-glam, full-dance, full-noise.

Joining them is **INFORDIN** whose explosive club performances include techno, world, garage, juke, and wider UK bass. If INFORDIN's sets are a call, your movement is the response.



NIGHT VISION



Kick off the Festival with our evening extravaganza of exhibition openings, gallery twilight hours, a **Voice Collective** gathering, roving performances and our rangatahi-led music gig **Tune Up**. Find a map of participating galleries and activations on our website – come and celebrate the start of our 2023 Festival with us!

PARTICIPATING GALLERIES + WHAKATŪ CBD | THURS 19 OCT | 5PM - 8PM | FREE

TUNE UP



Following its successful debut in 2022, **Tune Up** is back to transform Kirby Lane into an outdoor music hub with an awesome line-up of rangatahi musicians – all programmed by the amazing folk of Nelson Youth Council! Grab a bite from the food carts, have a boogie and hang out before you head out for a **Night Vision** wander.

KIRBY LANE | THURS 19 OCT | 5.30PM - 8PM | FREE

Supported by:



SENSORY SELF PORTRAITS



BAILEE LOBB

Enter into a breath-taking world of colour, filled with large-scale soothing sensory bubbles. This playful textile installation by autistic artist **Bailee Lobb** explores the pursuit of self-regulation and sensory supports. Works from **In Bathing**, **Bask** sit alongside a new performance-installation **How Do You Sleep At Night?**, in which Bailee will sleep in the gallery after selecting items to match her current sensory needs.

Supported by:



REFINERY ARTSPACE | 19 - 28 OCT | NIGHT VISION: THURS 19 OCT 5PM - 8PM | TUE - FRI 10AM - 5PM, SAT 10AM - 2PM | FREE
See website for performance times & Audio Described tour.

HERE IF YOU NEED



KURA FORRESTER

The highly anticipated follow-up to her 2019 Billy T Award-winning show, **Kura Forrester** (*Taskmaster NZ, Educators*) returns to update us on life at large. From her experience buying her first home, to her time starring as Desi on *Shortland Street*, and finally getting a puppy, **Here If You Need** comes with “guaranteed crack ups”!



THE BOATHOUSE | FRI 20 OCT | 8PM | 60 MIN | PWYC

Supported by: Tides Hotel & Orbit World Travel

AILMENTS



HAYLEY SPROULL

A dead kidney, a weak bladder, and a uterus shaped like the bunny from Donnie Darko - **Hayley Sproull**'s body is so contradictory it can handle cheap sav blanc but not a cube of pumpkin. Star of ZM Breakfast and *Have You Been Paying Attention?*, this award-winning comedian's hour of music and comedy sold out at the 2023 NZ Comedy Festival – so be quick!



THEATRE ROYAL | SAT 21 OCT | 8PM | 60 MIN | PWYC

Supported by: **Downing**

CAN I LIVE?



FEHINTI BALOGUN + COMPLICITÉ

“Why don't we talk about it?”, asks this vital new digital performance about the climate catastrophe. Weaving his personal story with spoken word, rap, theatre and the scientific facts, **Fehinti** charts a course through the fundamental issues underpinning the emergency, and sharing how, as a young Black British man, he has found his place in the climate movement.

SUTER THEATRE |
SUN 22 OCT | 4PM |
60 MIN | PWYC



BY WHAKATŪ RESIDENCY SHARING



We're proud to again gift a paid residency to an artist from our region, to progress their mahi or trial new ideas. On the final Sunday, come experience what they've been exploring, and some of the incredible ideas springing from our community!

SUTER THEATRE | SUN 29 OCT | 12.30PM | 60 MIN | DONATION

Supported by: **VenueTech**

COULD BE BIGGER.

ELISABETH POINTON



A bold, fun, 7 metre disruption literally pops up at the Airport this Festival: **Elisabeth Pointon's** inflatable monolith, accompanied by a new work at the Refinery ArtSpace, explores the privilege and power within language. Humorous and hyperbolic, Elisabeth's works expose and transgress stereotypes, acting as philosophical adages for our time.

NELSON AIRPORT + REFINERY ARTSPACE | 19 - 29 OCT | FREE
ARTIST TALK: REFINERY ARTSPACE | SAT 28 OCT | 1PM

Supported by:



Rout
Milner
Fitchett

LUNCHTIME CONCERTS



MIKE FORD & DUO ENHARMONICS

Midday music snack! On the 19th, join **Mike Ford** in an exploration of the tenor horn, or on the 26th, experience two exhilarating pianists playing with unanimity of feeling and mastery in **Duo Enharmonics**. Presented by NCMA.

NCMA | THURS 19 + 26 OCT | 12.30 PM | 50 MIN | TICKETED

THE SAVAGE COLONISER SHOW



TUSIATA AVIA

Fierce, furious, fabulously unforgiving: from its premiere at Auckland Arts Festival comes the celebrated stage adaptation of **Tusiata Avia's** unapologetic poetry collection. Following on from the triumphant *Wild Dogs Under My Skirt*, and again under the artful direction of **Anapela Polata'ivao**, Avia's examination of race and racism, the colonised and the coloniser, is full of bold humour, courage and lacerating truths.



"A production of unparalleled excellence" – Spinoff

Supported by:



THEATRE ROYAL | THURS 19 + FRI 20 OCT | 8PM | 70 MIN | PWYC
SCHOOLS SHOW: FRI 20 OCT | 1PM

FORCE OF NATURE: CELEBRATING 100 YEARS OF FOREST & BIRD



NZTRIO + FRIENDS



"[A] landmark concert demonstrating the abilities of our contemporary composers."
– NZ Arts Review

A gorgeous, rejuvenating evening of chamber music and taonga pūoro celebrating the conservation work of Forest & Bird. Featuring performances from **NZTrio, Peter Scholes, Bridget Douglas, Rob Thorne** and **Yoshiko Tsuruta**.

NCMA | MON 23 OCT | 5.30PM | 90 MIN | PWYC

Supported by: Nelson Magazine

DOUBLE GOER

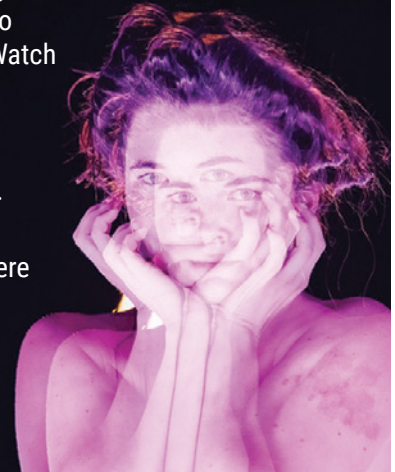


FOSTER GROUP DANCE

Double Goer (English for Doppelgänger) is a surreal and physically gruelling new dance work by award-winning choreographer **Sarah Foster-Sprull**, that chronicles the meeting, battle, and potential demise of two strikingly similar women. Watch two powerhouses fight for supremacy and exert their tricks, hustle, and feminine wiles. Joy. Power. Sensuality. Rage.

Fresh from its world-premiere at Edinburgh Fringe.

SUTER THEATRE |
TUES 24 + WED 25 OCT |
6.30PM | 50 MIN | PWYC



Presented by:

NelsonMail

MASK CARNIVALE

A forever Festival favourite, we're delighted to bring back our magical street party of the year!

Whether you're keen to (literally) parade the streets in your best mask and costume or simply join the festivities, Carnivale is for everyone. Discover new local talent, catch one of our brightest alt-pop stars, play games, share delicious kai, enjoy pop-up performances and see the city come alive with world-class dancers in **Tōrua**. Bring the whole whānau and celebrate spring with us!

See our website for more on the theme and to register for the parade.

WHAKATŪ CBD | FRI 27 OCT | 5PM - 10PM | FREE

Supported by:  UNIQUELY NELSON



RISE OF THE OLIVE LASER KIWI



Join the world's only olive-fuelled, award-winning comedy circus trio on a wild ride as they bring people closer together, one olive at a time. Having toured all over the world to critical acclaim with their refreshing sketch format, this show is a perfect balance of joyful, existential, hilarious and incredible. Expect high-level circus, bizarre ideas and a bloody good night out.

THEATRE ROYAL | TUES 24 + WED 25 OCT | 8PM | 60 MIN | PWYC

Supported by:  BlueBerry
Technology on your terms

TENSE



WRITTEN BY
DONNA MCLEOD,
PRESENTED BY
TE ORO HĀ

As a mokopuna of Taranaki, **Donna McLeod** carried her Nanny's kete to hui in the 70s, where the kaupapa was the Nelson Tenth's. In 2023, her whānau live on papakāinga in Motueka. Donna refuses to let her mokopuna carry her kete.

Intergenerational history. My history. Your history. Our history. Māori Theatre with pūrākau, taonga puroro, waiata, and poetry.

TE NONINGA KUMU MOTUEKA PUBLIC LIBRARY | WED 25 OCT | 7.30PM
+ THEATRE ROYAL | THURS 26 OCT | 8PM | 60 MIN | PWYC
SCHOOLS SHOW: FRI 27 OCT | 1PM



GIRL, IN A SAVAGE WORLD



THEIA X TE KAAHU

Celebrated singer-songwriter **Theia** presents re-imagined songs from her critically acclaimed alt-pop catalogue alongside dreamy waiata from her award-winning reo Māori project **Te Kaahu**. Theia's lyrics are often raw and confrontational, while Te Kaahu explores cultural identity, environment and spirituality. Bringing together both projects for this Aotearoa premiere tour, this powerful songwriter presents music of soaring heights and devastating depths.

THEATRE ROYAL | SAT 28 OCT | 6.30PM | 60 MIN | PWYC

Supported by: Tohu Wines



REIMAGINING MOZART

VOICES NZ CHAMBER CHOIR



This stunning new arrangement of Mozart's *Requiem* by **Robert Wiremu** is brought to life by the celebrated **Voices New Zealand Chamber Choir** and leading instrumental ensemble, and recreates the virtuosic, intimate experience as imagined by Mozart.

Commissioned and presented by **Chamber Music New Zealand**.

CHRIST CHURCH CATHEDRAL | SAT 28 OCT | 7.30PM | 60 MIN | TICKETED



COUCH STORIES



True stories told live without pictures or notes: **Couch Stories** is back with the much-loved couch and all new stories. These tales walk all paths of life, centred around this year's theme: Arrivals and Departures.

NCMA | WED 25 OCT | 8PM | 90 MIN | PWYC

TŌRUA

MOVEMENT OF THE HUMAN

Celebrated choreographer director **Malia Johnston** brings together seven incredible independent dance artists from across Aotearoa and Australia for the immersive experience **Tōrua**. From recent seasons at CubaDupa and HOTA Queensland, follow these spectacular movers as they bring their movement response to the alleyways and streets of Whakatū.

Arrive early for headsets. Wear walking shoes.

MEET AT REFINERY ARTSPACE | FRI 27 OCT DURING MASK CARNIVALE
SAT 28 OCT | 10AM + 12PM | 50 MIN | FREE



VICTORY POETRY SLAM



SHELDON RUA & TALIA STANLEY



Spoken Word speaks truth to power. Home to rich storytelling traditions, Aotearoa has many internationally acclaimed performance poets. Join **Sheldon Rua** and **Talia Stanley** for a workshop and/or exclusive performance live from the Victory Boxing ring - bring a poem or just come to listen.

POETRY WORKSHOP: VICTORY COMMUNITY CENTRE | MON 23 OCT | 11.30AM | 120 MIN | PWYC

PERFORMANCE: VICTORY BOXING | MON 23 OCT | 4PM | 60 MIN | PWYC

GRÁDA



From Sydney Opera House and Ireland's National Concert Hall to Upper Moutere: Irish music heroes **Gráda** reunite to tour their homelands - Ireland and Aotearoa. With over 1,000 cities in 30 countries over 10 years under their belt, Gráda are "to Irish music what Arcade Fire is to Indie - informal, prodigious and full of spirit" (The Washington Post).

NEUDORF VINEYARDS | SUN 29 OCT | 2PM (DOORS 12PM) | 75 MIN | PWYC

Supported by: Neudorf Vineyards & Avoca Web Design

Presented by:



PUKAPUKA TALKS

All pukapuka will be for sale through our Festival bookstore **Paper Plus Nelson**, both at their shop and at their stall at all Pukapuka Talks sessions – your opportunity to meet the authors and get your books signed!

WRITING FUNNY STORIES: SCHOOLS' WORKSHOPS



ELMA TURNER LIBRARY | WED 18 OCT | 1.30PM | 75 MIN | SCHOOL BOOKING

TE NONINGA KUMU MOTUEKA PUBLIC LIBRARY | THURS 19 OCT | 9.30AM | 75 MIN | SCHOOL BOOKING

Budding writers and comedians between the ages of 8 and 12 are invited to join **Leela Chakraborti** and her dad **Rajorshi Chakraborti** to learn how to craft funny stories.



CELEBRATION OF HIWA



SUTER ART GALLERY | SAT 21 OCT | 5PM | 60 MIN | FREE (but RSVP essential)

Join author and editor **Paula Morris** and some of her fellow contributors as we celebrate the Whakatū Nelson launch of this essential new anthology of our best Māori short fiction.



IN THE TEMPLE



CATHERINE BAGNALL + JANE SAYLE

SUTER ART GALLERY | THURS 19 OCT | 5.30PM | 20 MIN | FREE

Hot on the heels of their acclaimed 2021 collaboration, artist **Catherine Bagnall** and poet **Jane Sayle** celebrate another collection of watercolours and poems inspired by nature.



TACKLING HATE: FACING UP TO FEAR & LOATHING IN AOTEAROA



THEATRE ROYAL | SUN 22 OCT | 11AM | 60 MIN | PWYC

Join poet **Tusiata Avia**, activist **Jennifer Shields** and disinformation researcher **Byron C Clark** as they discuss both their lived experience of hatred and what we can do to protect ourselves and others. Chaired by **Madeleine Chapman** (Editor, *The Spinoff*).



TOOLS FOR NAVIGATING OUR CRAZY WORLD



SUTER THEATRE | FRI 20 OCT | 12.30PM | 60 MIN | PWYC

Join psychologist **Alia Bojilova** and keen tramper and writer **Victoria Bruce** as they explore their resilience and respective understanding of the mind-body connection. Chaired by **Liz Price**.



THERE'S A CURE FOR THIS



THEATRE ROYAL | SUN 22 OCT | 1.30PM | 60 MIN | PWYC

Award-winning doctor and writer **Dr Emma Espiner** discusses her stunning debut memoir, *There's a cure for this*, with **Arihia Latham**. Together they kōrero about hurt and healing, love and loss, life and death, motherhood and medicine.



WHEN THE PAST CATCHES UP



SUTER THEATRE | FRI 20 OCT | 3:00 PM | 60 MIN | PWYC

Caroline Barron's Golden Days and **Anne Tiernan's The Last Days of Joy** are both gripping novels that explore how the past can haunt us in the present. Chaired by **Paula Morris**.

Don't miss **Caroline Barron's Workshop for Writers**: Sun 22 Oct | 3pm

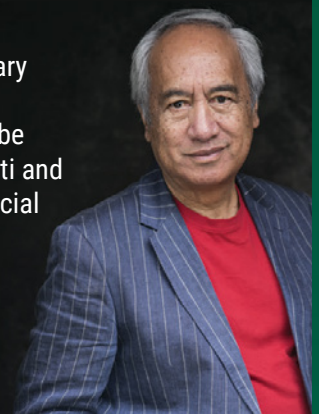


WITI & FRIENDS GALA NIGHT



THEATRE ROYAL | SUN 22 OCT | 7PM | 90 MIN | PWYC

This year marks the 50th anniversary of **Witi Ihimaera's Tangi**, the first novel written by a Māori author to be published in New Zealand. Join Witi and six fellow Māori writers at this special gala event to celebrate Aotearoa storytelling: **Emma Espiner** (MC), **Vaughan Rapatahana**, **Ruby Solly**, **Donna McLeod**, **Arihia Latham** and **Airana Ngārewa**.



WINE O'CLOCK MYTH MEETS THE DRINKING GAME

SUTER THEATRE | FRI 20 OCT | 6PM | 60 MIN | PWYC

Lotta Dann (Mrs D), the author of three bestselling books about alcohol, joins RNZ broadcaster **Guyon Espiner** to discuss why the odds are stacked against those who want to get off booze. Buckle up for a sobering look into how the way you drink is shaped not only by your individual choice, but also by government, media and big business. Chaired by **Matty Anderson**.

Supported by: Chia Sisters



FORAGING YOUR WAY TO WELLNESS

MOUTERE HILLS COMMUNITY CENTRE | MON 23 OCT | 12PM | 60 MIN | PWYC

Explore the fascinating world of fungi with **Liv Sisson** (*Fungi of Aotearoa*) and **Valetta Sówka** (*Family of Forest and Fungi He Tukutuku Toiora*). Chaired by fellow fungi fanatic **Sylvan Thomson**.

Keen for lunch? Pre-order local kai when you book your ticket. Drinks for sale on the day.



KAWAI: FOR SUCH A TIME AS THIS

SUTER THEATRE | SAT 21 OCT | 11AM | 60 MIN | PWYC

Monty Soutar ONZM shares the story behind his bestselling and critical acclaimed debut novel, *Kawai: For Such a Time as This*. Chaired by **Guyon Espiner**.



END TIMES: THE QUESTION OF HOPE

SUTER THEATRE | SAT 21 OCT | 1.30PM | 60 MIN | PWYC

Rebecca Priestly discusses her new book, *End Times*, which is part memoir/part road trip exploring climate science, climate denial and belief systems. Chaired by **Jude Watson**.



DAZZLING NEW VOICES

SUTER THEATRE | SAT 21 OCT | 4PM | 60 MIN | PWYC

Emma Ling Sidnam, **Airana Ngārewa** and **Colleen Maria Lenihan** discuss their stunning debut books and reveal what gave them the courage to write. Chaired by **Paula Morris**.



AFTER DARK II: DUSK CHORUS

BROOK WAIMĀRAMA SANCTUARY | MON 23 OCT | 7.30PM | 130 MIN | PWYC

Join us in the Beech Glade at dusk, where **Arihia Latham** will read from her debut poetry collection, *Birdspeak*, alongside her cousin **Ruby Solly**, who will perform verse from her second book, *The Artist*. Get crepuscular!



COUNTER-CULTURE

TE NONINGA KUMU MOTUEKA PUBLIC LIBRARY | TUES 24 OCT | 6PM | 60 MIN | PWYC

Commune: Chasing a Utopian Dream in Aotearoa captures the spirit of the counter-culture movement in the Motueka Valley from the perspective of **Olive Jones**, one of the founding members of the Graham Downs community. Chaired by **Kerry Sunderland**.



MOKORUA: NGĀ KŌRERO MŌ TŌKU MOKO KAUAE – MY STORY OF MOKO KAUAE

SUTER THEATRE | SAT 28 OCT | 2PM | 60 MIN | PWYC

Join singer, taonga pūoro musician and writer **Ariana Tikao** for a kōrero about her new book, *Mokorua*, which is a revealing and emotional account of how she received her moko kauae. Held in conjunction with tā moko exhibition **Kanohi Kitea**.



Scan for All Events



Scan for Pukapuka Talks

NIGHT VISION • VOICE COLLECTIVE
TUNE UP • BAILEE LOBB • ELISABETH POINTON
KLAASZ BREUKEL • LEVEL 5 NMIT ARTS & MEDIA STUDENTS
TUSIATA AVIA, FCC • ANAPELA POLATA'IAVO • KURA FORRESTER
HAYLEY SPROULL • FEHINTI BALOGUN • COMPLICITÉ • SHELDON RUA + TALIA STANLEY
NZTRIO, PETER SCHOLES, BRIDGET
FOSTER GROUP DANCE • LASER KIWI • DOUGLAS, ROB THORNE + YOSHIKO TSURUTA
MOVEMENT OF THE HUMAN • THEIA X TE KAAHU • TE ORO HĀ • COUCH STORIES • MASK CARNIVALE
BY WHAKATŪ RESIDENCY ARTIST • GRÁDA • MĀ & THE FLY HUNNIES • CHAIL • KITA • JAZMINE MARY
DELUSIONAL DISCO DRONGOS • JU JULIPPS + INFORDIN • RAJORSHI CHAKRABORTI + LEELA CHAKRABORTI
CATHERINE BAGNALL • JANE SAYLE • ALIA BOJILOVA • VICTORIA BRUCE • LIZ PRICE • ANNE TIERNAN
CAROLINE BARRON • PAULA MORRIS • AIRANA NGĀREWA • LOTTI DANN • MATTY ANDERSON • MONTY SOUTAR
REBECCA PRIESTLEY • JUDE WATSON • MADELEINE CHAPMAN • EMMA LING SIDNAM • COLLEEN MARIA LENIHAN
VAUGHAN RAPATAHANA • DONNA MCLEOD • LIV SISSON • VALETTA SÓWKA • ARIHIA LATHAM • WITI IHIMAERA
OLIVE JONES • KERRY SUNDERLAND • ARIANA TIKAO • SYLVAN THOMSON • RUBY SOLLY
DUO ENHARMONICS • ALVARO MORENO • KAROLINA GORTON • CULTURAL CONVERSATIONS RANGATAHI ARTISTS
LUCIA ZÚÑIGA CÁCERES • KAREN SEWELL • KANOHI KITEA • KERI-MEI ZAGOBELNA • MIKE FORD